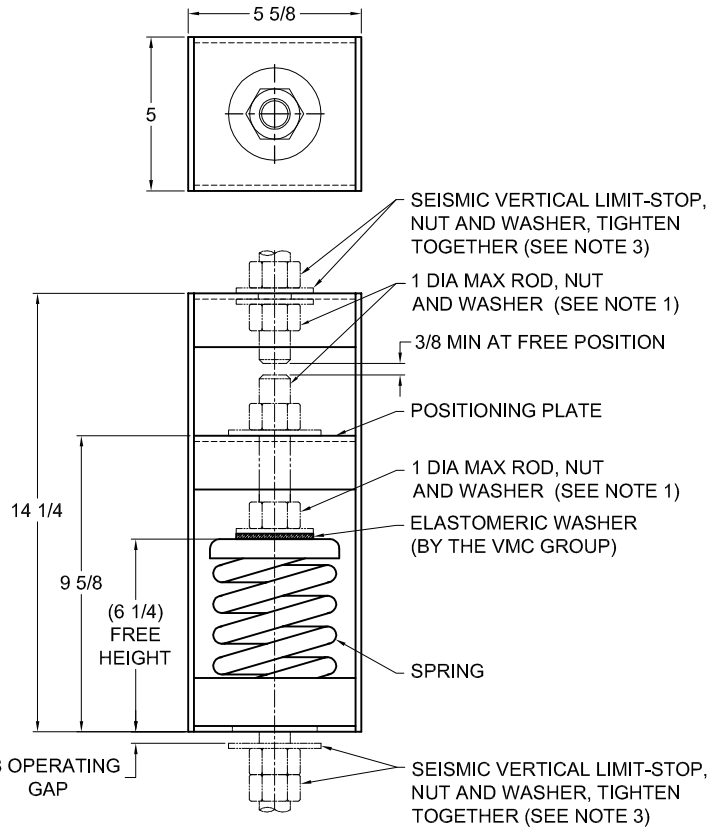


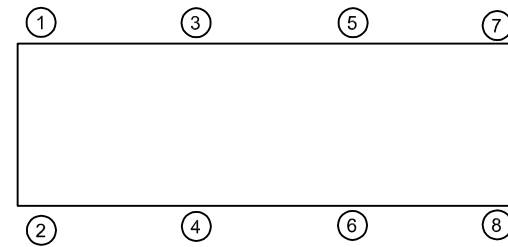
| REV. | DESCRIPTION | DATE | BY |
|------|-------------|------|----|
|      |             |      |    |



| TYPE HSP-2E SPRING POSITIONING HANGERS FOR 2" NOMINAL DEFLECTION |                  |                 |                     |                   |
|--|------------------|-----------------|---------------------|-------------------|
| HANGER   | RATED LOAD (LBS) | DEFLECTION (IN) | SPRING RATE (LB/IN) | SPRING COLOR CODE |
| HSP-2E-80  | 80               | 2.00            | 40                  | BLACK             |
| HSP-2E-150   | 150              | 2.00            | 75                  | GREEN             |
| HSP-2E-300   | 300              | 2.00            | 150                 | DK YELLOW         |
| HSP-2E-500   | 500              | 2.00            | 250                 | BLUE              |
| HSP-2E-776N <sup>1</sup>   | 776              | 2.00            | 388                 | BLUE/BLACK        |
| HSP-2E-1000  | 1000             | 2.00            | 500                 | TAN               |
| HSP-2E-1400  | 1400             | 1.87            | 749                 | RED               |
| HSP-2E-1600N <sup>1</sup>  | 1600             | 2.13            | 750                 | TAN/RED           |
| HSP-2E-1800  | 1800             | 1.71            | 1053                | DK GRAY           |
| HSP-2E-2050  | 2050             | 1.64            | 1250                | DK BLUE           |
| HSP-2E-2250N <sup>1</sup>  | 2250             | 1.62            | 1389                | DK BLUE/BLACK     |
| HSP-2E-2460N <sup>1</sup>  | 2460             | 1.64            | 1500                | DK BLUE/RED       |
| HSP-2E-2700N <sup>1</sup>  | 2700             | 1.64            | 1646                | DK BLUE/ DK GREEN |

**NOTES:**

1. TWO NESTED SPRINGS YIELD THIS LOAD. THE COLOR CODE INDICATED IS FOR OUTER SPRING/ INNER SPRING.



**NOTES:**

- HANGER RODS, NUTS AND WASHERS, AS SHOWN, NOT BY THE VMC GROUP.
- STANDARD FINISH: HANGER BOX - PAINTED, POWDER COATED OR GALVANIZED STEEL, SPRING - POWDER COAT.
- SEISMIC VERTICAL LIMIT-STOP REQUIRED FOR SEISMIC APPLICATIONS. NOT BY THE VMC GROUP. INSTALL WASHER .16 THK. MIN. X 3 O.D. MIN. WITH REQUIRED INSIDE DIAMETER TO ACCOMMODATE ROD SIZE IN USE. THIS CAN BE ACCOMPLISHED BY USING A SINGLE WASHER OR BY STACKING NOT MORE THAN TWO WASHERS
- ALL DIMENSIONS IN INCHES. INTERPRET PER ANSI Y14.
- ALL DIMENSIONS ARE FOR REFERENCE, DIMENSIONS SHOWN AS NOMINAL.
- ALL SPRINGS ARE DESIGNED WITH MINIMUM 50% OVER-TRAVEL.
- RATED DEFLECTIONS ARE WITHIN 25% OF NOMINAL. HIGHER DEFLECTIONS ARE ALLOWED IF THEY MEET SPECIFICATIONS.

**ISOLATOR SELECTIONS**

|                      |        |
|----------------------|--------|
| LOC 1:               | LOC 2: |
| LOC 3:               | LOC 4: |
| LOC 5:               | LOC 6: |
| LOC 7:               | LOC 8: |
| CUSTOMER EQP'T. TAG: |        |

NOTE: MATERIAL SHOWN IS FOR (1) SET.

OTHER MATERIALS, COMPOUNDS, OR FINISHES WITH EQUAL OR SUPERIOR PROPERTIES MAY BE SUBSTITUTED AS THEY BECOME AVAILABLE.

**CERTIFIED FOR:**

JOB NAME: \_\_\_\_\_  
 CUSTOMER : \_\_\_\_\_  
 CUSTOMER P.O.: \_\_\_\_\_  
 SALES ORDER: \_\_\_\_\_

**MODEL HSP-2E 80-2700 LBS. SPRING POSITIONING HANGERS 2 INCH DEFLECTION**



**THE VMC GROUP**  
*The Power of Together*  
 Bloomingdale, NJ 07403  
 Houston, TX 77041

SCALE :

NONE

SHEET:



DRAWING NO.:

REVISION